

Ironbound Film and Television Studios



www.ironboundfilmstudios.com

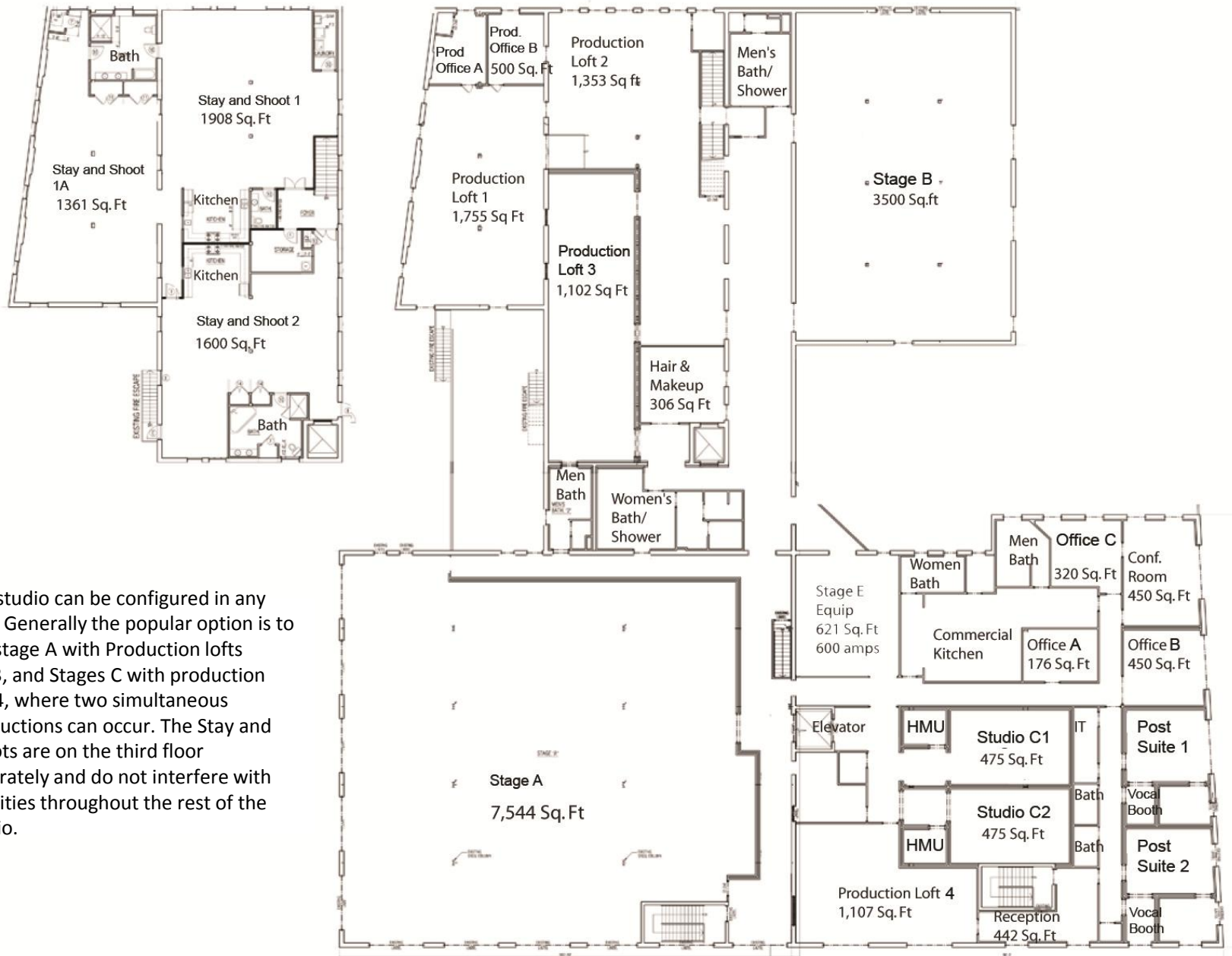
Ironbound District
164 Delancy St.
Newark, NJ 07105

Contact: Peter Meister (201) 456-4754
Mary Beth O'Connor (917) 842-9571

Studio Highlights

- Cheaper rates than NYC
- Easy access from/ proximity to NYC
 - 15 minutes via train from Midtown to Newark Penn. 30 min car ride from Brooklyn and Midtown. Easy proximity to highways 78 and 95.
- 7,500 sq. ft. stage
- 3,500 sq. ft. stage/art /equipment department
- 9,000 amps power, 160 tons A/C
- 2 green screen stages
- Extensive production office/support space
- 2 editing suites, and capacity for more
- Commercial kitchen
- 2 show kitchens
- Loading bay
- Huge inventory of lighting equipment
- Props/sets

Ironbound Film and Television Studios Floorplan



The studio can be configured in any way. Generally the popular option is to use stage A with Production lofts 1,2,3, and Stages C with production loft 4, where two simultaneous productions can occur. The Stay and Shoots are on the third floor separately and do not interfere with activities throughout the rest of the studio.

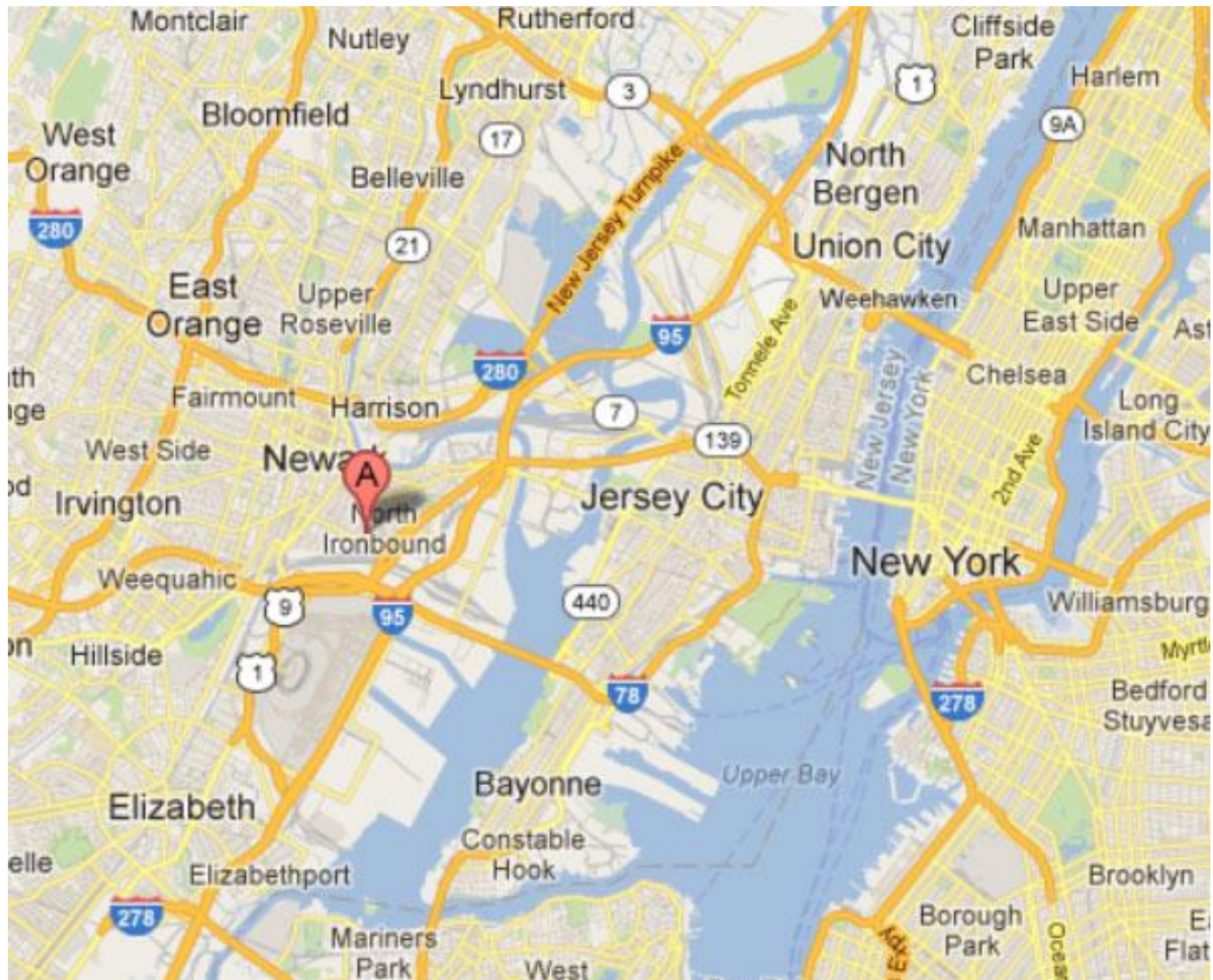
Ironbound

Film and Television Studios

A beautiful, unique, urban facility, partially-zoned residential, that can support 80 to 100 cast and crew members working comfortably and efficiently.

Long and short-term spaces for shooting, **living**, building, meeting, storing, controlling and loading in comfort, safety and privacy.

Location



Sky View relative to Newark



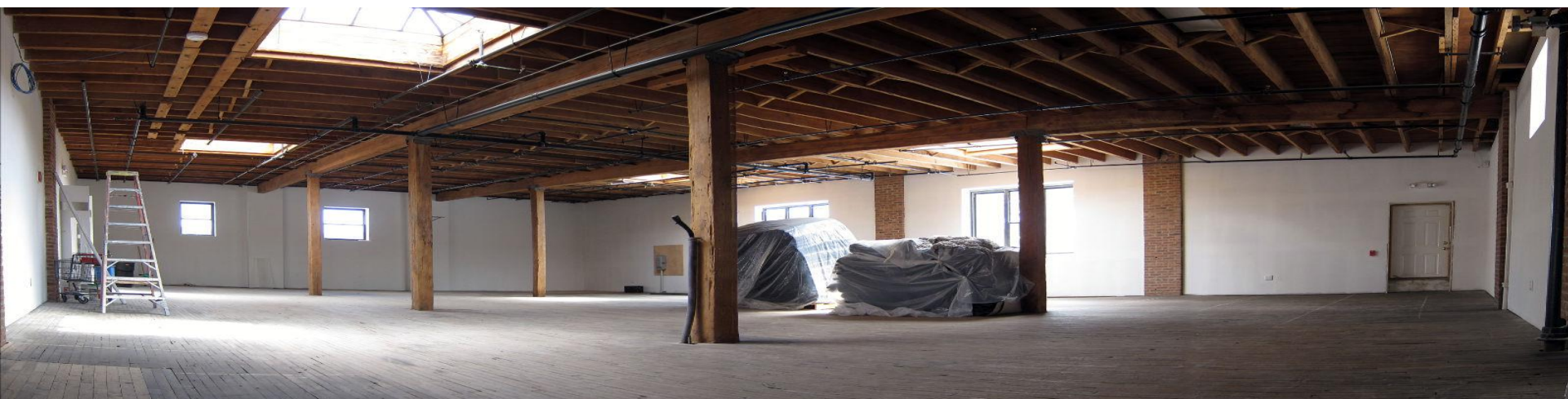
Eclectic neighborhood with great places to eat on the same block, 5 minutes to construction retailer, 7 minutes to international airport and hotels, 20 minutes to the biggest equipment rental houses on east coast, 30 minutes to midtown Manhattan.



Stage A

92' x 82' x 13' (7,500 Sq. Ft)

2,100 Amps



Stage B

73' x 48' x 14' (3,500 sq. ft.)

1,500 Amps



Stay and Shoot Loft 1

Stay and Shoot Lofts

Two separate full residential open floor plan lofts with 600 amp service

Full custom home kitchens, full bathrooms and laundry room

50 Mbps Wired and Wireless Data and Voice network



Stay and Shoot Loft 2

(Top) Stay and Shoot Loft 1 (1,908 Sq. Ft)

(Bottom) Stay and Shoot Loft 2 (1,361 Sq. Ft.)

Also Includes a 1,498 sq. ft adjacent loft.

Insert Stages (x2)

Studio C1

28ft x 16ft x 14ft (475 Sq. Ft)

Studio C2

28ft x 16ft x 14ft (475 Sq. Ft)

- Each powered by 300 amps with camlock connectors
- 14' to lighting grid
- Dedicated Hair & Make Up Rooms
- 50 Mbps Wired and Wireless network



Studio C1



Production Loft 1

Long-Term Production Lofts & Offices

Production Loft 1: 65ft x 27ft x 12ft (1,755 Sq. Ft)

Production Loft 2: 41ft x 33ft x 12ft (1,353 Sq. Ft)

- Producers Office with window (up to 3 work stations)
- Production Coordination (9 work stations outside Producer's Office)
- Director's Office with window (up to 3 work stations)
- Director's Unit Loft (9 work stations outside Director's Office)
- Desks and chairs
- Lock & Key - all offices and loft areas
- 50 Mbps Wired and Wireless Data and Voice network



Production Loft 4

Production Loft 3: (1,102 Sq. Ft)

50 Mbps Wired and Wireless Data and Voice network

Production Loft 4: (1,107 Sq. Ft)

50 Mbps Wired and Wireless Data and Voice network



Commercial Kitchen



4 Green / Talent Rooms, 2 with side rooms and bath
50 Mbps Wired and Wireless Data and Voice network

Production Support Areas

Equipment Room

27ft x 23ft x 14ft (621 Sq. Ft)

- 900 amp electrical panels with camlock connectors
- 25ft cable tray from Equipment room cage to Stage A lighting grid

Hair & Make-Up Room

18ft x 17ft x 12ft (306 Sq. Ft)

Sky lit Atrium, Catering Venue; Craft Services Central Court & Lounge

100ft x 15ft x 14ft (1,500 Sq. Ft)

- Craft Services stations
- Craft Services storage room
- Cafeteria tables and chairs

Flexible Spaces and Equipment

- 1 Full Commercial Kitchen and 2 Home Style kitchens
- 5 Offices for post-production
- Lounges/Green Rooms
- Conference Room
- Reception
- 11 and 1/2 Bathrooms, many with showers
- Outdoor space - 1000 Sq. ft.
- Lighting/Expendables/Grip Availability
- Edit Space and Systems Availability

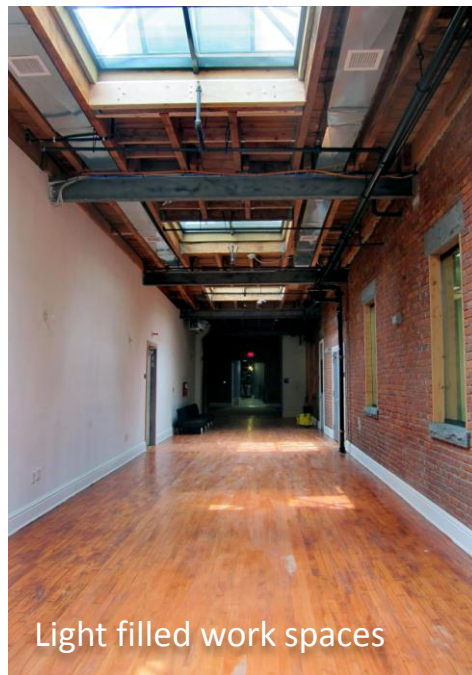




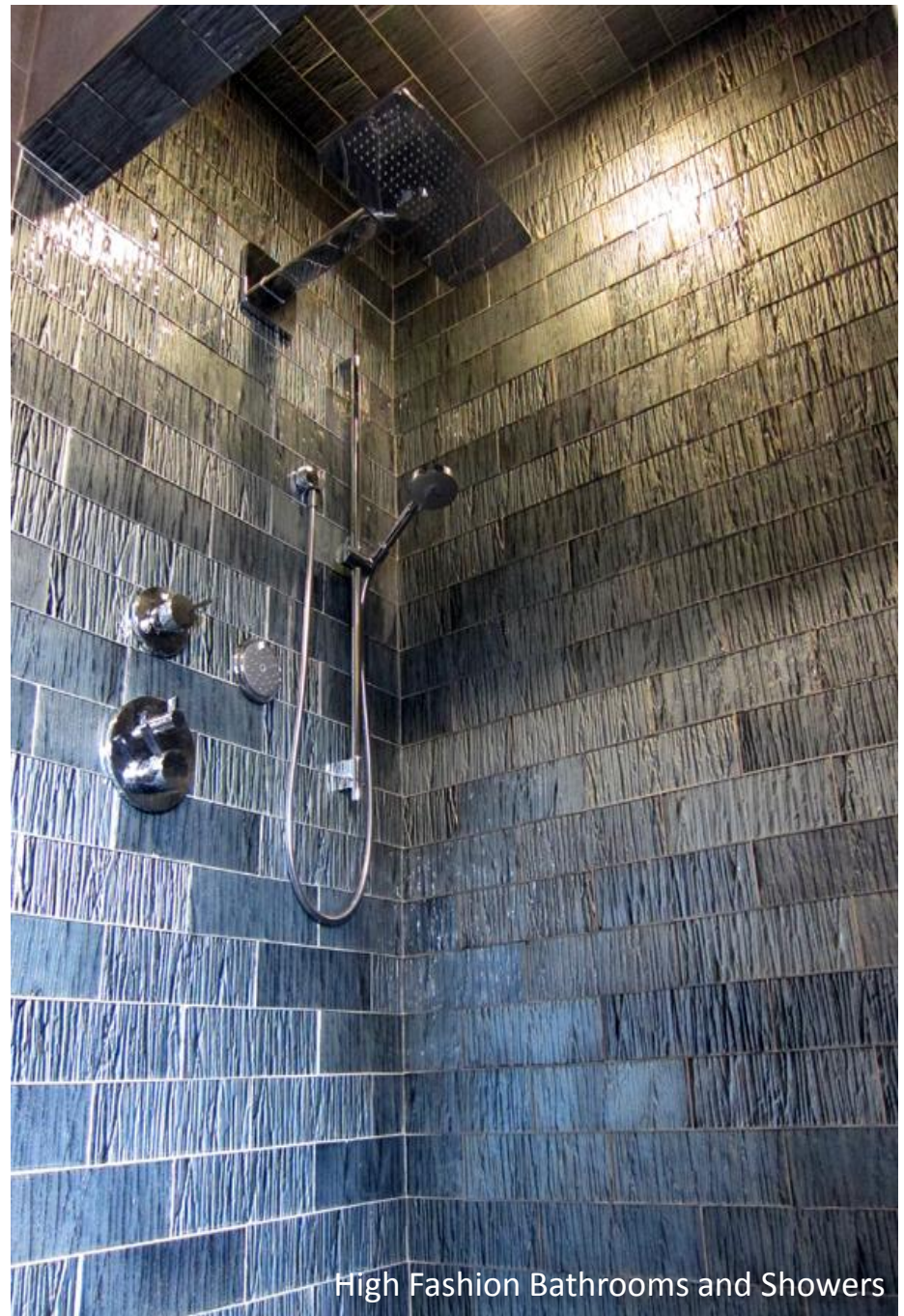
Commercial Kitchen



Brick and Steel Design



Light filled work spaces



High Fashion Bathrooms and Showers

It's a beautiful space.
We hope to see you here!

Ironbound Film and Television Studios



www.ironboundfilmstudios.com

Ironbound District

164 Delancy St.

Newark, NJ 07105

Contact: Peter Meister (201) 456-4754

Mary Beth O'Connor (917) 842-9571